

Mulburries

Burns Drive, Hemel Hempstead, HP2 7NR

Guide price £175,000



Burns Drive, Hemel Hempstead, HP2 7NR

Mulburries are excited to offer a well presented One Double Bedroom Top Floor Apartment located at the end of Burns Drive Cul-De Sac in Woodhall Farm.

The accommodation comprises of entrance hall with access to a boarded loft area, doors opening from hallway into a double bedroom with fitted wardrobes, a well-presented bathroom, bright and spacious lounge area leading to fitted kitchen.

Outside space offers one allocated parking space and access to communal garden area.

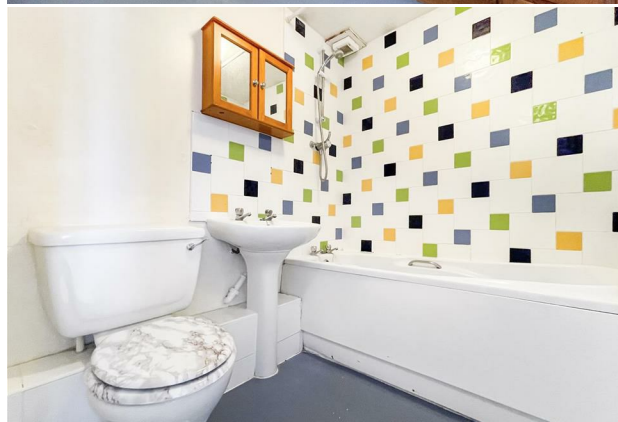
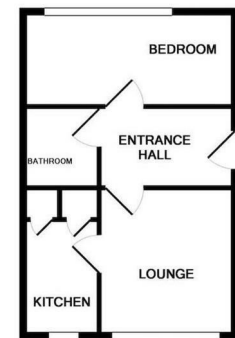
The property also offers easy access to Maylands Avenue Industrial Estate, M1 & M25 motorways and is ideally located for local bus routes and Sainsburys Super Store approximately 0.4 miles.

- One double bedroom
- Large lounge/dining area
- Fitted kitchen
- Well presented bathroom
- New night storage heaters
- Access to private loft space
- Loft insulation and cavity wall
- Allocated parking space
- 999 year lease
- Secondary glazing

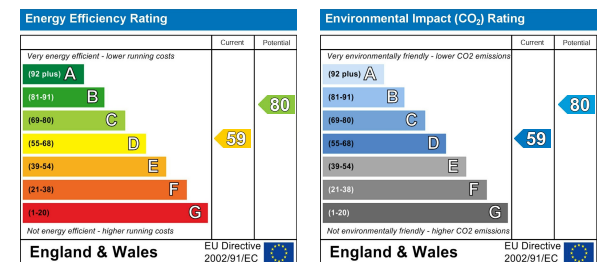
Area Map



Floor Plan



Energy Efficiency Graph



These particulars, whilst believed to be accurate are set out as a general outline only for guidance and do not constitute any part of an offer or contract. Intending purchasers should not rely on them as statements of representation of fact, but must satisfy themselves by inspection or otherwise as to their accuracy. No person in this firm's employment has the authority to make or give any representation or warranty in respect of the property.